

Pointhouse

SCHWINGER

Design Pointhouse

Scheda tecnica
/Technical sheet



Sedia in tubolare metallico a sezione tonda impilabile con scocca curvata in legno multistrato nobilitato melamminico

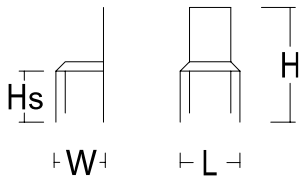
Seduta impilabile dalle curve delicate ed essenziali, con scocca in legno multistrato nobilitato melamminico effetto legno o monocoloro, da abbinare ai piani o alle gambe dei tavoli.

/ Stackable chair with round section tubular structure and melamine nobled curved plywood seat

Stackable chair with delicate and essential curves; melamine nobled curved plywood seat in monochrome or wood effect finish, matchable with the table tops or legs.

MISURE / SIZE:

L.47XW.50XHS.46XH.90



PESO & IMBALLO / WEIGHT & PACKING:



Numero colli
Boxes number

SCHWINGER

Box: 102x52x66
m3 0,350
tot. Kg. 16

FINITURE / FINISHES:

Struttura e gambe / Structure and legs:

Metallo verniciato
Painted metal

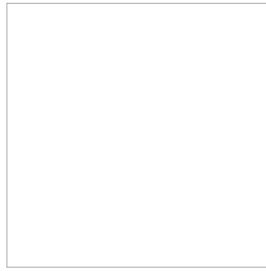
*Solo per fusto Eva 1 ed Eva 4
Only for Eva 1 and Eva 4 structures



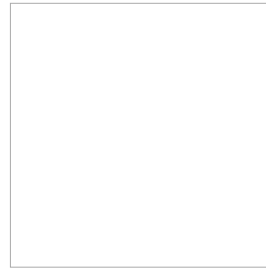
06 GHISA
CAST IRON



02 GRIGIO ALLUMINIO
ALUMINIUM GREY



04 BIANCO LUCIDO
POLISH WHITE



06 BIANCO OPACO
MATT WHITE



07 NERO OPACO
MATT BLACK



15 GRAFITE OPACO
MATT GRAPHITE 



18 GRIGIO SILVER
SILVER GREY



22 TORTORA
DOVE GREY



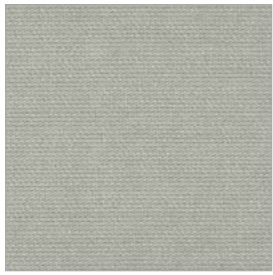
0P GRIGIO PIOMBO OPACO
MATT LEAD GREY

FINITURE / FINISHES:

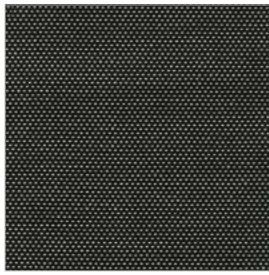
Seduta / seat:

Tessuto / Ecopelle / Pelle
Fabric / Similar leather / Leather

Tessuto Angel Trick / Angel Trick fabric



T101



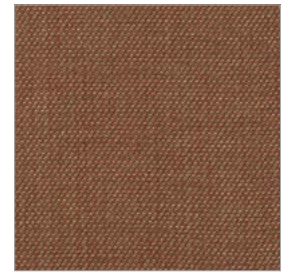
T221



T301



T302



T303



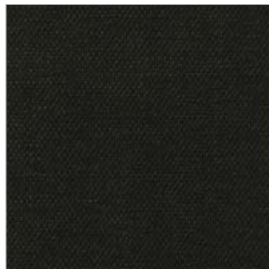
T304



T306



T400



T406



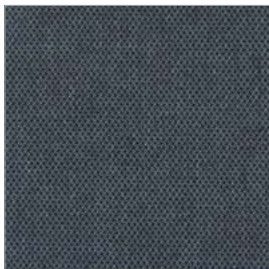
T701



T702



T703



T704



T801



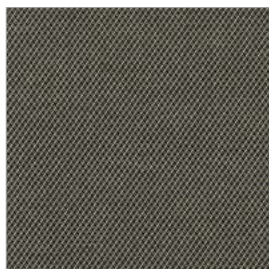
T803



T204



T405



T602



T900



abitex

abitex srl
via del cristo 84
33044 manzano
ud - italy

t +39 0432 746060
www.abitex.eu
info@abitex.eu

angel trick 08163



IT

codice doganale

54072011.

utilizzo

tende, imbottiti.

caratteristiche

100% polipropilene, altezza cm \pm 140,
peso \pm 350 gr/m².

tintura

il prodotto é tinta in massa.

lunghezza pezze

circa 35 mtl.

abrasione

50.000 cicli, ISO 12947-2.

solidità alla luce

4-5, ISO 105 B02.

solidità allo sfregamento

secco 5, umido 4/5, ISO 105 X12.

resistenza alla cucitura

ordito 3 mm, trama 2 mm, ISO 13936-2.

pilling

4-5, ISO 12945-2.

resistenza al fuoco

1IM - UNI 9175; EN 1021 1/2; BS 5852 crib 5;
NF D 60 013; California TB 117-2013;
IMO FTP Code 307 part 8.

attenzione

sono ammesse leggere differenze di colore tra differenti partite.

EN

customs code

54072011.

use

curtains, upholstered furniture.

features

100% polypropylene, width cm \pm 140,
weight \pm 350 g/m².

dyeing

solution dyed product.

roll length

approx. 35 lm.

abrasion resistance

50.000 rubs, ISO 12947-2.

colour fastness to light

4-5, ISO 105 B02.

fastness to rubbing

dry 5, wet 4/5, ISO 105 X12.

seam slippage

warp 3 mm, weft 2 mm, ISO 13936-2.

pilling

4-5, ISO 12945-2.

fire resistance

1IM - UNI 9175; EN 1021 1/2; BS 5852 crib 5;
NF D 60 013; California TB 117-2013;
IMO FTP Code 307 part 8.

attention

slight colour differences between different batches are allowed.



fireproof



imo-med

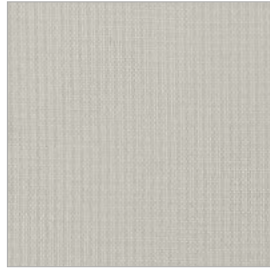
Tessuto Flash Nativa /Flash Nativa fabric



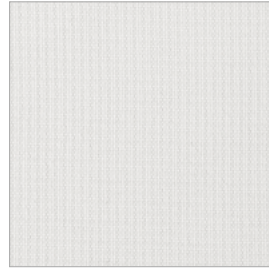
F001



F002



F101



F111



F200



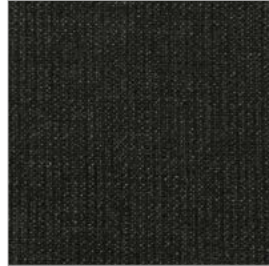
F300



F301



F305



F403



F500



F601



F700



F705



F707



F800



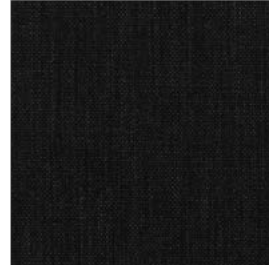
F804



F402



F600



F602



abitex

abitex srl
via del cristo 84
33044 manzano
ud - italy

t +39 0432 746060
www.abitex.eu
info@abitex.eu

flash nativa

08091



IT

codice doganale

54072011.

utilizzo

imbottiti.

caratteristiche

100% polipropilene, altezza cm \pm 140,
peso \pm 320 gr/m².

tintura

il prodotto é tinta in massa.

lunghezza pezze

circa 35 mtl.

abrasione

> 70.000 cicli, ISO 12947-2.

solidità alla luce

4-5, ISO 105 B02.

solidità allo sfregamento

secco 5, umido 4/5, ISO 105 X12.

resistenza alla cucitura

ordito 3 mm, trama 3 mm, ISO 13936-2.

pilling

4-5, ISO 12945-2.

attenzione

sono ammesse leggere differenze di colore tra differenti partite.

EN

customs code

54072011.

use

upholstered furniture.

features

100% polypropylene, width cm \pm 140,
weight \pm 320 g/m².

dyeing

solution dyed product.

roll length

approx. 35 lm.

abrasion resistance

50.000 rubs, ISO 12947-2.

colour fastness to light

4-5, ISO 105 B02.

fastness to rubbing

dry 5, wet 4/5, ISO 105 X12.

seam slippage

warp 3 mm, weft 3 mm, ISO 13936-2.

pilling

4-5, ISO 12945-2.

attention

slight colour differences between different batches are allowed.

Tessuto M.A.M. / M.A.M. Fabric



M205 ANTRACITE



M616 FERRO



M027 CENERE



M019 PERLA



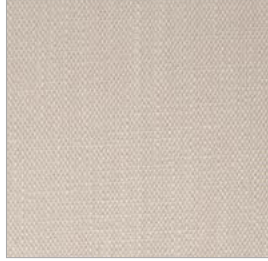
M014 BLU



M015 JEANS



M016 AZZURRO



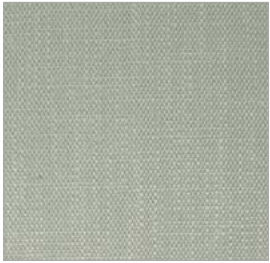
M105 CIPRIA



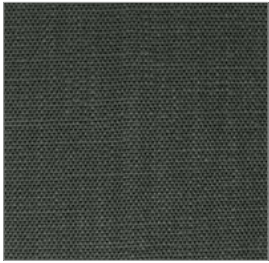
M023 MALVA



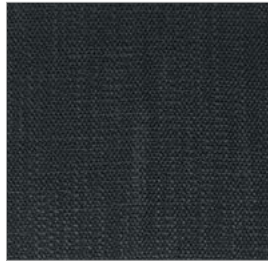
M080 AMARENA



M021 PALUDE



M204 MUSCHIO



M013 OTTANIO



M028 GIALLO



M007 TERRACOTTA



M002 BISCOTTO



M001 BEIGE



M200 NATUR



M.A.M.

tessuti

181 Favignana



IT

altezza

140 cm

composizione

87PL 13VI

peso mtl

840 gr

resistenza al pilling

4 - ISO 12945 - 2

resistenza all'abrasione

50000 metodo martindale BSI 5690

solidità alla luce

5 XENO TEST

note

Idrorepellente

EN

hight

140 cm

structure composition

87PL 13VI

weight mtl

840 gr

pilling resistance

4 - ISO 12945 - 2

abrasion resistance

50000 metodo martindale BSI 5690

fastness to light

5 XENO TEST

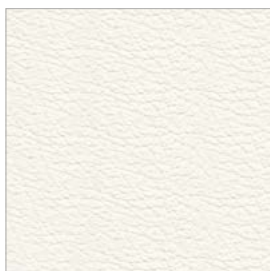
note

waterproof

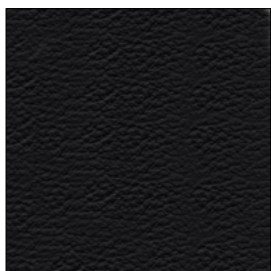
Ecopelle / Similar leather

E' un tessuto che ha l'aspetto della pelle o del cuoio ma non è realizzato con materiale animale. Esso è composto da tessuto su cui viene spalmato del materiale plastico (poliuretano o poliammide) per simulare la superficie del pellame, ciò ne determina una facile pulizia ed impermeabilità.

It is a fabric that has the look of leather but it is not realized with animal material. This is composed by a fabric on which is spread some plastic material (polyurethane or polyamide) to create the leather surface, that makes it easy to clean and waterproof.



48 BIANCO
WHITE



49 NERO
BLACK



50 TABACCO
TOBACCO



51 BLU
BLUE



52 TESTA DI MORO
DARK BROWN



53 CEMENTO
CEMENT



54 GRAFITE
GRAPHITE



55 CRETA
TAUPE



56 PIOMBO
OLIVE GREY



57 BORDEAUX
BORDEAUX



58 ROSSO
RED

Pelle KEEN /KEEN leather

Pelle realizzata su bufali, conciata al cromo, tintura all'anilina passante in botte, rifinita all'acqua in tinta unita. Mano morbida di facile utilizzo su qualsiasi tipologia di arredamento. Pelli da mq. 3.8/4 – Spessore 0.9-1.0 mm.

Leather produced from Buffalo, water finished in solid colours. Soft hand, useful for every application in furnishing. Skins about 3.8/4 sq.m thickness 0.9-1.0 mm.



P501



P502



P503



P504



P505



P506



P507



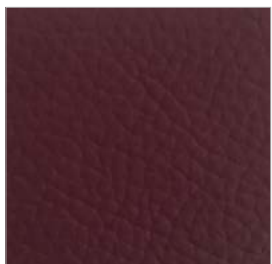
P508



P509



P510



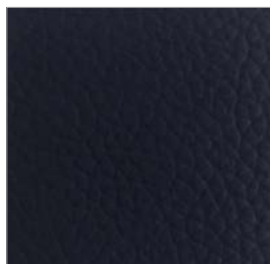
P511



P512



P513



P514



P515



P516



P517



P842